



# Silent





# Silent

Silent is a chenille flatwoven quality, which is in our Comfort Collection.

Textafoam launched this multicoloured quality in 2019 and it became successful rather quickly. Our development department got the assignment to extend the colour line of this nice article for the new 2020 collection. The result is a wide new range of commercial, trendy and fresh colours, in total now even 21.

The chenille yarns provide Silent an extra soft and voluminous hand feel. Kindly note that during daily use, a woolen / hairy aspect can appear, this can be taken away with a pilling razor and has no further influence on the quality or durability of this textile.

Silent is suitable for both fitted and loose fitting upholstery, it is yarn dyed and therefore a very stable colour consistency.

- We recommend to wash the cover inside out and immediately place the cover back to the piece of furniture, slightly damp, after washing.

*Textafoam originals* Established in 1970, this Dutch family business brings together craftsmen in textiles and furniture design to build an unrivalled portfolio in upholstery fabrics that meets buyer's needs every time. Featuring a wide colour range, ultimate value for money and excellent reliability in the supply chain.

## Composition

/ faceside 90%PES 10%PAC  
/ backside n/a  
/ chenille flatweave

## Suitable for

sofa's, beds, chairs with fitted and loose fitting upholstery



anthracite 67



ashgrey 40



bronze 116



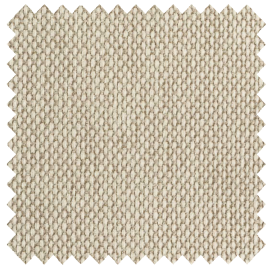
burgundy 34



coffee 81



copper 126



cream 02



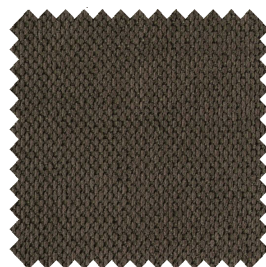
darkblue 48



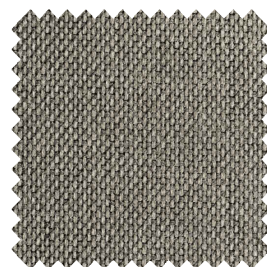
darkgrey 68



graphite 66



hunter 156



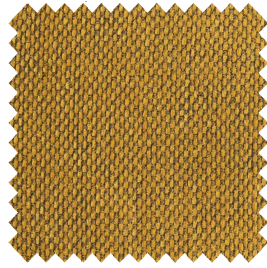
lightgrey 60

Please note: colours may vary according to your screen settings.





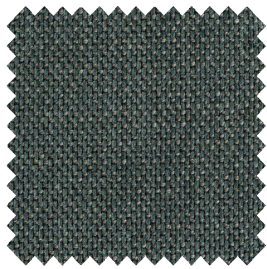
liver 10



mustard 06



natural 01



petrol 56



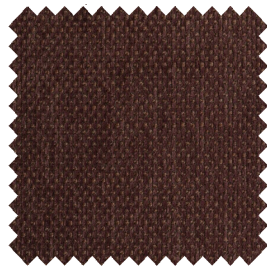
steel 149



taupe 12



turtle 88



winered 39



wood 108

Please note: colours may vary according to your screen settings.

## Silent - Article passport

Silent is a chenille flatwoven quality with an extra soft and voluminous hand feel.

Available from stock in a wide range of contemporary and commercial colours.

### Product characteristics

Productgroup	chenille flatweave
Applications	sofa's, beds, chairs with fitted and loose fitting upholstery
Composition faceside	90%PES 10%PAC
Composition backside	n/a
Coating	transparent
Statistic code	58013600
Dyeing method	yarn dyed
Available colours	21
Packaging	bubble wrap

### Durability specifications

Test	Test specification	Executed by laboratory:	Unit	Testresult		Norm RAL GZ 430/4:2019-01		Norm DIN EN 14 465:2006-09
				Dry	Wet	DGM	DGM+	
Abrasion resistance - yarn breakage	DIN EN ISO 12947-1:2007-04, DIN EN ISO 12947-2:2017-03	CTL	cycles	50.000		min. 8.000	min. 16.000	A
Pilling	DIN EN ISO 12945-2:2000-11. 2000 cycles	CTL	grade	4		min. 3-4	min. 4	B
Colour fastness to light	DIN EN ISO 105-BO2:2014-11. Process 3, exposure level 5							
	light colours	CTL	grade	5		min. 4	min.5	B
	middle colours	CTL	grade	5		min. 4	min.5	B
Colour fastness to rubbing	DIN EN ISO 105-X12:2016-11							
	light colours	CTL	grade	5	4-5	dry: 4, wet: 3	dry: > 4, wet: 3-4	A/A
	middle colours	CTL	grade	5	4-5	dry: 4, wet: 3	dry: > 4, wet: 3-4	A/A
Colour fastness to rubbing	DIN EN ISO 105-X12:2016-11							
	dark colours	CTL	grade	5	5	dry: 4, wet: 3	dry: > 4, wet: 3-4	A/A
	light colours	CTL	grade	5	4-5	dry: 4, wet: 3	dry: > 4, wet: 3-4	A/A
Ignitability (cigarette test)	BS 5852 part 1 (1979) from The Furniture and Furnishing (Fire) (Safety) regulations: 1988 No. 1324. Schedule 4 part 1 Ignition source 0: cigarette	CTL		passed				

### Processing specifications

Minimum workable width in centimeters	± 140							
Roll length in meters	± 40							
Material weight in grams per linear meter	± 532							
Test	Test specification	Executed by laboratory:	Unit	Testresult		Norm RAL GZ 430/4:2019-01		Norm DIN EN 14 465:2006-09
				Warp	Weft	DGM	DGM+	
Tensile strength	DIN EN ISO 13934-1:2013-08	CTL	Newton	2.169	811	min. 350	min. 400	A/A
Tear growth resistance	DIN EN ISO 13937-3:2000-06	CTL	Newton	201,8	86,4	min. 25	min. 30	A/A
Resistance to seam slippage	DIN EN ISO 13936-2:2004-07. Load 180 N	CTL	mm	3,0	4,5	max. 5	max. 4	A/B
Delamination	DIN 53530:1981-02	CTL	Newton	n/a	n/a	n/a	n/a	n/a
Chemical substances	REACH	Centexbel		passed				
	Oeko-Tex, product class II	Centexbel		certified				

### Cleaning specifications

Test	Test specification	Executed by laboratory:	Unit	Testresult		Norm RAL GZ 430/4:2019-01		Norm DIN EN 14 465:2006-09
				Warp	Weft	DGM	DGM+	
Dimensional change for washing 30 degrees celcius / air drying	DIN EN ISO 5077:2008-04, DIN EN ISO 6330:2013-02, DIN EN ISO 3759:2011-08	CTL	%	-1,7	-2,7	n/a	n/a	A/B

- We recommend to wash the cover inside out and immediately place the cover back to the piece of furniture, slightly damp, after washing.



**Textaafoam**  
creativity in fabrics

Textaafoam b.v.  
La Défense 11 | 5026 SC Tilburg  
P.O. Box 12 | 5050 AA Goirle  
The Netherlands

T +31(0)13 534 5934  
F +31(0)13 534 7586  
E info@textaafoam.nl  
www.textaafoam.nl