



# Sneak



OEKO-TEX®  
CONFIDENCE IN TEXTILES





# Sneak

Sneak is a woven quality within our Comfort collection. This collection consists of soft and elegant fabrics.

With Sneak our development team added a nice feeling fabric to this collection, yet with a rough multicoloured look. Using chenille yarns Sneak has a nice authentic, luxurious and soft look and feel. It is yarn dyed with multicoloured aspect and woven on a dobby loom. In the weft a chenille bouclé yarn combined with the needle punch coating; together they provide Sneak its voluminous and nice grip. A damp and dirt prevention finish makes Sneak easy to clean and maintain and is washable at 30 degrees (machine wash). So this fabric can be enjoyed for a long time.

This article can be applied widely; perfect for loose fitting upholstery like covers as well as for tight fitted furnitures. Sneak looks rich and holds a surprisingly good hand feel.

We first introduced Sneak during Proposte 2017; the bouclé woven structure with chenille yarns was a complete new look at the forefront of market trends. In 2019 the market really picked up in terms of volume and satisfaction. Enough reason to update the range of colours with some fresh new contemporary tones.

- We recommend to wash the cover inside out and immediately place the cover back to the piece of furniture, slightly damp, after washing.
- Please note that during washing the damp- and dirt prevented treatment will disappear faster.
- Dirt and damp prevention treatment applied.

*Textafoam originals* Established in 1970, this Dutch family business brings together craftsmen in textiles and furniture design to build an unrivalled portfolio in upholstery fabrics that meets buyer's needs every time. Featuring a wide colour range, ultimate value for money and excellent reliability in the supply chain.

## Composition

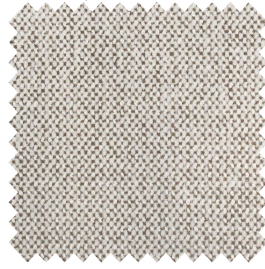
/ faceside 100%PES  
/ backside n/a  
/ chenille flatweave

## Suitable for

sofa's, beds, chairs with fitted and loose fitting upholstery



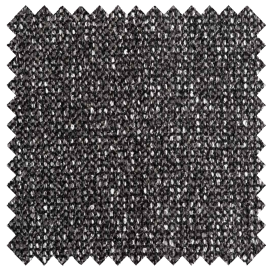
anthracite 67



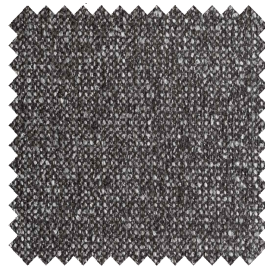
beige 05 (new colour)



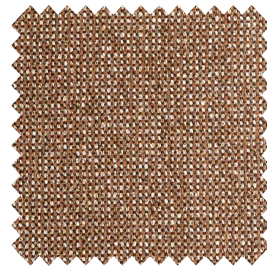
caramel 16



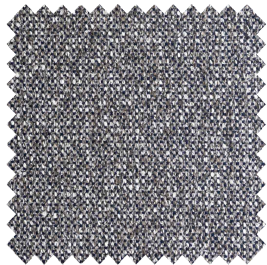
graphite 66



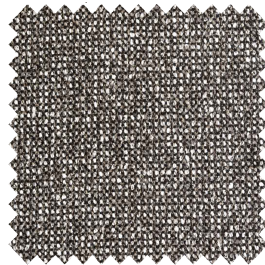
grey 65



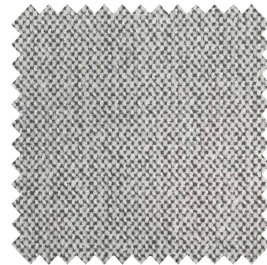
hazel 96



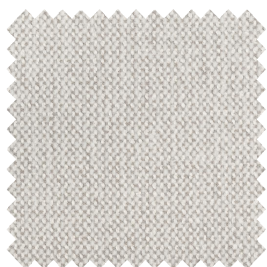
indigo 90



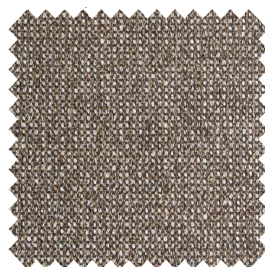
lava 165



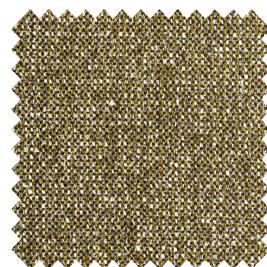
lightgrey 60 (new colour)



linen 110 (new colour)

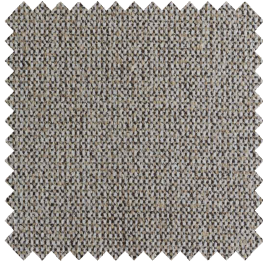


liver 10

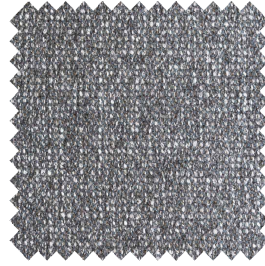


moss 59

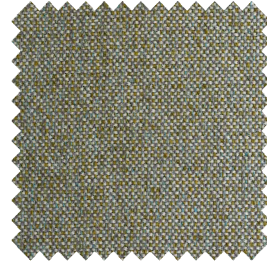
Please note: colours may vary according to your screen settings.



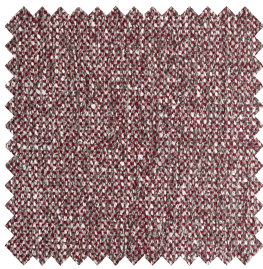
natural 01



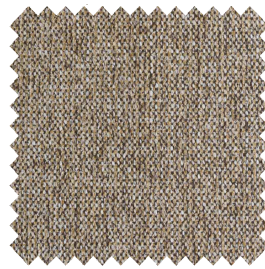
niagara 158



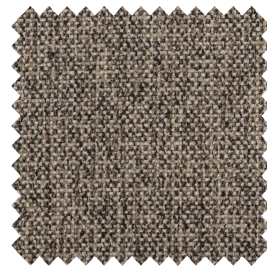
olive 53



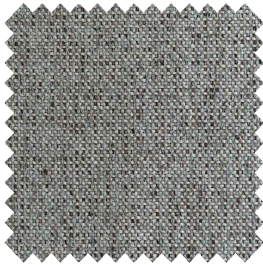
scarlet 141



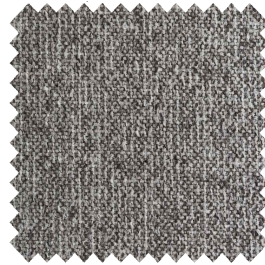
sesame 113



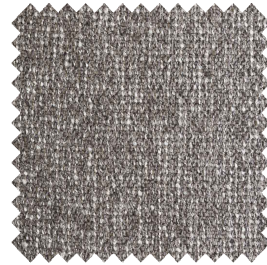
shitake 124 (new colour)



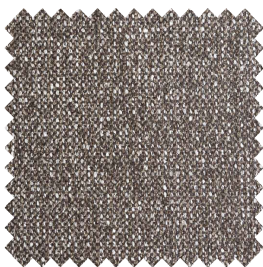
sky 142



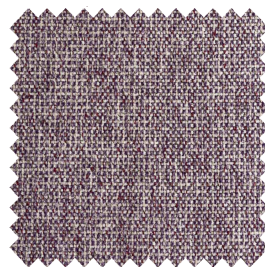
steel 149



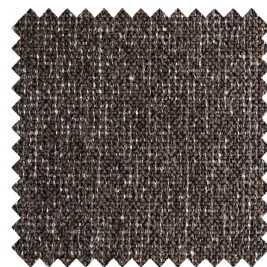
stone 181



taupe 12

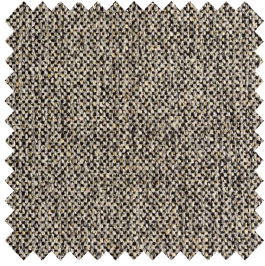


violet 72



wenge 192

Please note: colours may vary according to your screen settings.



wood 108

Please note: colours may vary according to your screen settings.

## Sneak - Article passport

Rough multicoloured look, in combination with a fine and soft handfeel.

Available from stock in a wide range of contemporary and commercial colours.

### Product characteristics

|                      |   |
|----------------------|---|
| Productgroup         | chenille flatweave  |
| Applications         | sofa's, beds, chairs with fitted and loose fitting upholstery |
| Composition faceside | 100%PES   |
| Composition backside | n/a   |
| Coating              | needle punch  |
| Statistic code       | 58013600  |
| Dyeing method        | yarn dyed   |
| Available colours    | 25  |
| Packaging            | transparent plastic   |

### Durability specifications

| Test                                | Test specification                                      | Executed by laboratory:  | Unit   | Testresult |                | Norm RAL GZ 430/4:2019-01 |                    | Norm DIN EN 14 465:2006-09 |
|-------------------------------------|---|--|--------|------------|----------------|---------------------------|--------------------|----------------------------|
|                                     |   |  |        | Dry        | Wet            | DGM                       | DGM+               |                            |
| Abrasion resistance - yarn breakage | DIN EN ISO 12947-1:2007-04, DIN EN ISO 12947-2:2017-03  | CTL  | cycles | 68.000     |                | min. 8.000                | min. 16.000        | A                          |
| Pilling                             | DIN EN ISO 12945-2:2000-11. 2000 cycles                 | CTL  | grade  | 4-5        |                | min. 3-4                  | min. 4             | A                          |
| Colour fastness to light            | DIN EN ISO 105-BO2:2014-11. Process 3, exposure level 5 |  |        |            |                |                           |                    |                            |
|                                     | light colours   | CTL  | grade  | 5          |                | min. 4                    | min.5              | B                          |
|                                     | middle colours  | CTL  | grade  | 5          |                | min. 4                    | min.5              | B                          |
| Colour fastness to rubbing          | DIN EN ISO 105-X12:2016-11                              |  |        |            |                |                           |                    |                            |
|                                     | light colours   | CTL  | grade  | 4-5        | 4-5            | dry: 4, wet: 3            | dry: > 4, wet: 3-4 | A/A                        |
|                                     | middle colours  | CTL  | grade  | 4-5        | 5              | dry: 4, wet: 3            | dry: > 4, wet: 3-4 | A/A                        |
| dark colours                        | CTL   | grade  | 4-5    | 5          | dry: 4, wet: 3 | dry: > 4, wet: 3-4        | A/A                |                            |
|                                     | Ignitability (cigarette test)                           | BS 5852 part 1 (1979) from The Furniture and Furnishing (Fire) (Safety) regulations: 1988 No. 1324. Schedule 4 part 1 Ignition source 0: cigarette | CTL    | passed     |                |                           |                    |                            |

### Processing specifications

|   |       |
|---|-------|
| Minimum workable width in centimeters     | ± 140 |
| Roll length in meters                     | ± 40  |
| Material weight in grams per linear meter | ± 518 |

| Test                        | Test specification                     | Executed by laboratory: | Unit   | Testresult |       | Norm RAL GZ 430/4:2019-01 |          | Norm DIN EN 14 465:2006-09 |
|-----------------------------|--|-------------------------|--------|------------|-------|---------------------------|----------|----------------------------|
|                             |  |                         |        | Warp       | Weft  | DGM                       | DGM+     |                            |
| Tensile strength            | DIN EN ISO 13934-1:2013-08             | CTL                     | Newton | 1.323      | 483   | min. 350                  | min. 400 | A/B                        |
| Tear growth resistance      | DIN EN ISO 13937-3:2000-06             | CTL                     | Newton | 139,0      | 159,1 | min. 25                   | min. 30  | A/A                        |
| Resistance to seam slippage | DIN EN ISO 13936-2:2004-07. Load 180 N | CTL                     | mm     | 5,5        | 3,5   | max. 5                    | max. 4   | B/A                        |
| Delamination                | DIN 53530:1981-02                      | CTL                     | Newton | n/a        | n/a   | n/a                       | n/a      | n/a                        |
| Chemical substances         | REACH                                  | Centexbel               |        | passed     |       |                           |          |                            |
|                             | Oeko-Tex, product class II             | Centexbel               |        | certified  |       |                           |          |                            |

### Cleaning specifications

| Test   | Test specification  | Executed by laboratory: | Unit | Testresult |      | Norm RAL GZ 430/4:2019-01 |      | Norm DIN EN 14 465:2006-09 |
|--|---|-------------------------|------|------------|------|---------------------------|------|----------------------------|
|  |   |                         |      | Warp       | Weft | DGM                       | DGM+ |                            |
| Dimensional change for washing 30 degrees celcius / air drying | DIN EN ISO 5077:2008-04, DIN EN ISO 6330:2013-02, DIN EN ISO 3759:2011-08 | CTL                     | %    | 0,0        | 0,0  | n/a                       | n/a  | A/A                        |

- We recommend to wash the cover inside out and immediately place the cover back to the piece of furniture, slightly damp, after washing.
- Please note that during washing the damp- and dirt prevented treatment will disappear faster.
- Dirt and damp prevention treatment applied.



**Textaafoam**  
creativity in fabrics

Textaafoam b.v.  
La Défense 11 | 5026 SC Tilburg  
P.O. Box 12 | 5050 AA Goirle  
The Netherlands

T +31(0)13 534 5934  
F +31(0)13 534 7586  
E info@textaafoam.nl  
www.textaafoam.nl